

Waiheke Local Board Community Forum

What: Community Forum Agenda

Where: Waiheke Local Board offices, 10 Belgium Street, Ostend; MS Teams

When: 11 September 2024 5:30pm – 7:00pm

PRESENT

Members: Cath Handley (Chair)
 Bianca Ranson (Deputy Chair)
 Kylee Matthews
 Robin Tucker
 Paul Walden

Apologies:

Absent:

Time	Topic	Speaker(s)	Proposed outcome(s)
5:30pm	Karakia and introductions	Chair Cath Handley	Formally open the meeting.
5:35pm	WISH Trust update.	Andrew Walters <i>Manager, WISH Trust</i>	Members will be introduced to the new manager and hear about upcoming plans and activities.
5:50pm	Waiheke Musical Museum Charitable Trust	Gerda Gorgner <i>Chair, WMMCT</i>	Members will receive an update on activities at the museum.
6:05pm			
6:20pm			
6:35pm			.
6:50	Closing karakia	Chair Cath Handley	Formally close the meeting



WAIHEKE
MUSICAL
MUSEUM

FOUNDED BY LLOYD & JOAN WHITTAKER

Annual Report from the Chair

for the financial year to 31 March 2024



Annual Report from the Chair

Waiheke Musical Museum Charitable Trust

1 April 2023 to 31 March 2024

Table of Contents

- About the Museum..... 3
- Our Mission..... 3
- Governance..... 3
- Operational Changes..... 4
- Communications..... 4
- Events Organiser..... 4
- New Brand Design 4
- New Chairs 5
- Venue Improvements 6
- Curation of the Collection 7
- Instrument Maintenance and Tuning..... 8
- Whittaker’s Love Story Permanent Display..... 8
- Live@Five Concerts..... 9
- Special Events..... 9
- Open Days 9
- Volunteers..... 10
- Tour Performances..... 11
- Donors & Patrons..... 11
- Sponsors..... 11
- Supporters..... 11
- Visitor Statistics..... 12
- What Next? 12

About the Museum

Waiheke Musical Museum, located on Waiheke Island since 1996 and founded by Joan and Lloyd Whittaker, is a national treasure where visitors can not only see and hear heritage instruments, but play many of them as well. The voices of our instruments are alive, making for a truly musical museum experience. Residents and visitors to the island can attend the museum in person, and we are building an online presence so people worldwide can access the museum's resources.

The museum also provides a very special venue for concerts, tours, and community and educational events. Musicians and audiences alike enjoy the intimate setting where we offer affordable, high-quality concerts, as well as free events to the Waiheke Community. The museum is also used by Waiheke Choral Society as their rehearsal space, and by other community organisations.

Waiheke Musical Museum Charitable Trust was established in 1997 and has a Board of Trustees that manage and govern the museum. A team of over 30 volunteers give hundreds of hours of their time each year to perform a variety of tasks, from cleaning the museum to running tours. A part-time events organiser is contracted to organise concerts and tours.

The Museum's main source of income comes from ticket sales for concerts and tours, donations, and grants.

Our Mission

As a Charitable Trust our mission is set out in our Trust Deed:

- » To care for and actively display a unique collection of antique and unusual musical instruments
- » To promote the enjoyment of music to all ages through tours, concerts, and other musical events in the Museum
- » To provide support and performance opportunities for emerging young musicians.

Governance

The Trust can have up to seven Trustees, with four forming a quorum. Several changes have happened on the Board of Trustees this year:

- » Anne Jocelyn (Chair), Marine Le Minor (Treasurer), Pip Neville-Barton (Secretary) and Jan Robertson stepped down after many years of tireless service to the museum. We owe all of them huge gratitude for their many hours of volunteer work and for their tenacity and perseverance throughout the pandemic
- » New trustees Gerda Gorgner and David Rawsthorne took on the roles of Chair and Treasurer respectively. The Board was further strengthened by the addition of Dr Julia Peters, David Glover, and Libby Johns. Sally-Anne Alloway and Liffy Roberts served as trustees for part of the year.

Operational Changes

During the year several operational changes were made to strengthen the organisational structures, ensure greater resilience, and reduce significantly the hours that volunteers and the event organiser were putting into administrative tasks:

- » Accounting, ticketing, bookings, website, and payment options were modernised and simplified
- » Further upgrading of the website and a simpler ticketing system is planned.

Communications

In these times of information overload, it can be challenging to attract new visitors and audience members. We continue to promote the work of the museum online and in person:

- » Our monthly newsletter and concert reminders are now going out to 450 subscribers. This is over 100 more than last year
- » We have formed relationships with Waiheke Adult Learning, Waiheke Cinema, the Waiheke Health Trust, and Lewis Eady Pianos (Auckland)
- » Our events organiser has continued to write to tour operators, retirement villages, and community organisations to promote our tours.

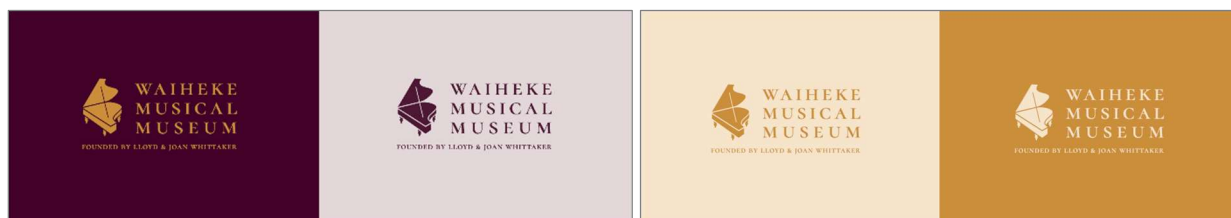
Events Organiser

Last winter Sophie Perkins passed the baton of event organising to Emma Korn. The Event Organiser:

- » Sets the year's programme, with approval of the Board
- » Liaises with the artists and manages all the paperwork and advertising
- » Markets tours

New Brand Design

The Waiheke Local Board approved a grant which enabled us to fund a local graphic designer to create our new brand design. This has further helped with more efficient and time saving administration procedures. The feedback on our colours and new look has been very positive too.



Colour options of our new logo

New Chairs

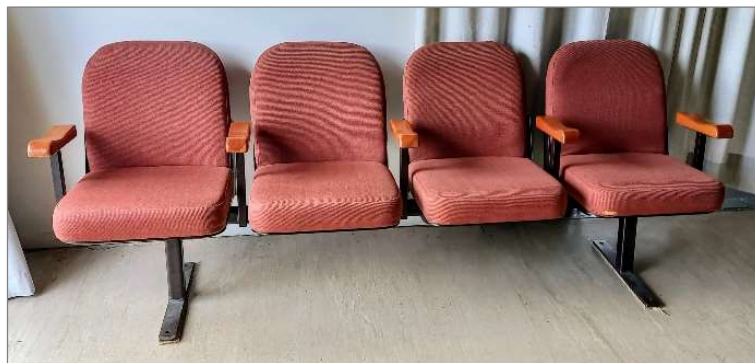
A major turning point for the museum was the acquisition of new chairs, thanks to a very generous grant from the Waiheke Local Board. Our original chairs were once theatre seating. While they were comfortable, they were very heavy and could not be stacked or arranged individually.

We are very grateful to our team of volunteers who removed the old chairs and scrubbed the floor, and to the team at *Island Waste Collective* who helped us to dispose of the old chairs and to recycle most of the wood and metal of the chair frames.

The new chairs:

- » Allow flexibility in seating to cater to the different needs of our visitors
- » Increase our seating capacity from 68 to 80
- » Give greater comfort for audiences and improved visibility of the stage
- » Can be stacked, locked together, and rearranged easily.

The new chairs were sourced from Alloyfold, a company that is owned by the Pathway Charitable Group. The products they sell fund affordable accommodation, employment and skills programmes, prisoner reintegration and social work in New Zealand.



The original old chairs, once theatre seating



Our new flexible seating which can be stacked and interlocked

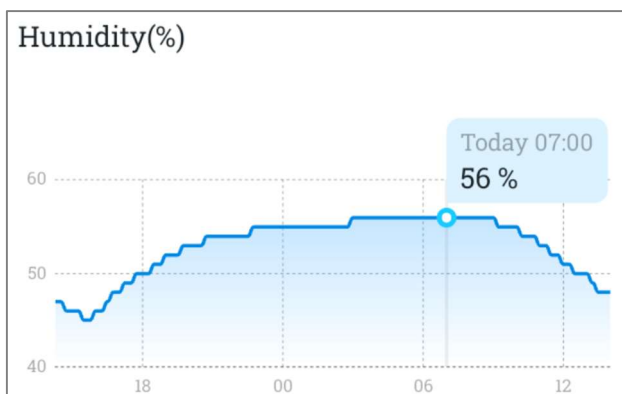
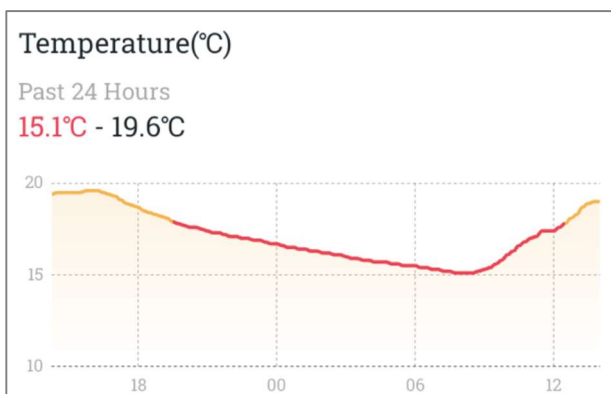
Venue Improvements

We have made some progress to give the museum a much-needed lift:

- » Greenroom facilities have been improved and we now have access to hot water
- » New blinds and curtains now protect the instruments from the harsh sunlight
- » Humidity and temperature monitoring can now be done remotely
- » New instrument labelling is underway



Kim Whitaker designed, built, and installed the new greenroom wall partition



Our new remote temperature & humidity monitoring helps us regulate the environment remotely

Curation of the Collection

Thanks to a grant from Te Papa, we were able to conduct a curation assessment of all instruments and we are now working towards a better display of instruments, based on the assessments. All our curators are experts in their fields.

- » The pianos, organs, string and other miscellaneous instruments were evaluated by Professor Uwe Grodd and eminent piano restorer Paul Downie
- » The accordion collection was evaluated by Grayson Masefield and Kevin Friedrich.



Kevin Friedrich, Grayson Masefield and Professor Uwe Grodd at the museum

Instrument Maintenance and Tuning



Piano tuners are as rare as hen's teeth and we are most fortunate to have Nancy Howie, a specialist in the tuning of old instruments, attending to our collection.

A grant from the Waiheke Local Board is helping to cover the costs of her work.

Nancy Howie tuning the Bechstein Grand

Whittaker's Love Story Permanent Display

A new permanent display giving an overview of the lives and achievements of our founders, Lloyd and Joan Whittaker, was installed this year.

This was donated by Kim Whitaker and the graphic design work was done by Cassie McCracken.



Cassie McCracken & Kim Whitaker with the permanent display

Live@Five Concerts

The museum's monthly Live@Five concerts attract high calibre musicians. We have not increased ticket prices this year, and we do not charge any administration or card fees when buying online or paying at the door.

This year's performers included:

- » Ākarana Piano Quartet (in partnership with Chamber Music New Zealand)
- » AOTANGO Duo (violin & accordion)
- » Basant Madhur Ensemble
- » Calathea String Quartet (in partnership with Chamber Music New Zealand)
- » Catherine Oh & Jesse Young (piano duo)
- » Flavio Villani (piano)
- » Francis Lee Duo (violin & piano)
- » Jade String Quartet
- » Kaha Piano Trio
- » Mishra and Good Habits
- » New Zealand String Quartet
- » NZTrio

Special Events

In addition to the Live@5 concerts we have offered a range of different events:

- » Tanya Batt and the Egyptian Piano: Stories for children
- » Two events at the Auckland Heritage Festival
- » Steinway Table Piano's 150th Birthday Party
- » Christmas Singalongs for community events
- » Waiheke Primary Schools Teachers Event
- » The Whittaker's Love Story
- » A fundraiser for a Waiheke High School student
- » Treasurer Hunt in association with Artworks Theatre
- » Free monthly concerts for community groups supporting people with health or other issues
- » Folk club singalongs

Open Days

With an increasing pool of volunteers, we have been able to open the museum from Friday to Sunday, for three hours each day. During the four weeks of Sculpture on the Gulf we even managed to open every day for a few hours.

Visitor numbers are clearly on the increase and our volunteers are busy.

For drop-in visitors, we put together a "self-guided" tour, which introduces our top ten instruments.



Some of our Live@Five concerts in the last year

Volunteers

Special thanks should go to our 30 volunteers, who are always there when help is needed. It is their efforts which have given the museum a new life after COVID-19. They make themselves available to carry out a range of activities which are essential for the running of the museum:

- » Performing for tours and free community concerts
- » Working on relationship building with other community groups
- » Making it possible for the museum to be open on weekends
- » Cleaning and repairing
- » Transporting musicians
- » Distributing posters

Tour Performances

During the year, our tour guides, Janneke Visser, Roger Jeffery, Anne Willmann and Kim Whitaker, have provided regular tour performances to many groups visiting the museum such as Probus, retirement villages, and birthday parties. The guides not only explain the history of the museum and of the instruments, but also demonstrate what they sound like.

A very big thank you to Reg Towers who has retired from tour guiding in 2023. His tours have been an essential and much-loved part of the museum for many years.



Kim, Anne, Janneke and Roger



Reg Towers

Donors & Patrons

We have a very supportive group of donors and patrons, who generously give money and support to the museum not only financially. They spread the word, encourage others to consider patronage, and attend concerts faithfully.

Sponsors

Without the ongoing support of **Fullers 360** (ferry tickets for the artists), **Waiheke Local Board** (grants) and **Auckland Council** (building and other support) there would be no museum.

Goldies Vineyard have generously donated wine for social functions during the year.

Supporters

A very big THANK YOU to everyone who comes to our concerts and events and who brings visitors to the museum.

A special THANK YOU to Professor Uwe Grodd who has been supporting the museum in countless ways and to James Yoo (University of Auckland) who has referred outstanding music students to perform at the museum.

Visitor Statistics

We record visitor numbers for all concerts, other events, open days, and tours. This year we saw 3,460 visitors through our doors, three times the number in the previous year!

	Live@Five	Other Events	Open Days	Tours	TOTAL
Number of Events	13	12	100	21	146
Visitors / Audience	871	502	1,600	487	3,460

What Next?

With increased costs and funding cuts looming, the Board of Trustees is taking a proactive approach to the challenges of the year ahead.

The 2024 concert series is confirmed, and we have exceptional offerings for the Waiheke community. Planning for the 2025 programme is well underway.

For the new financial year our priorities are

- » Further improve the venue and the display of our instruments
- » Secure funding for the event organiser contract and increase financial resilience
- » Improve our digital presence
- » Strengthen administrative structures and the capabilities of the Board of Trustees
- » Ensure that all sections of the community can have a great musical experience at the museum

With gratitude to our primary sponsors for their ongoing support



www.musicalmuseum.org